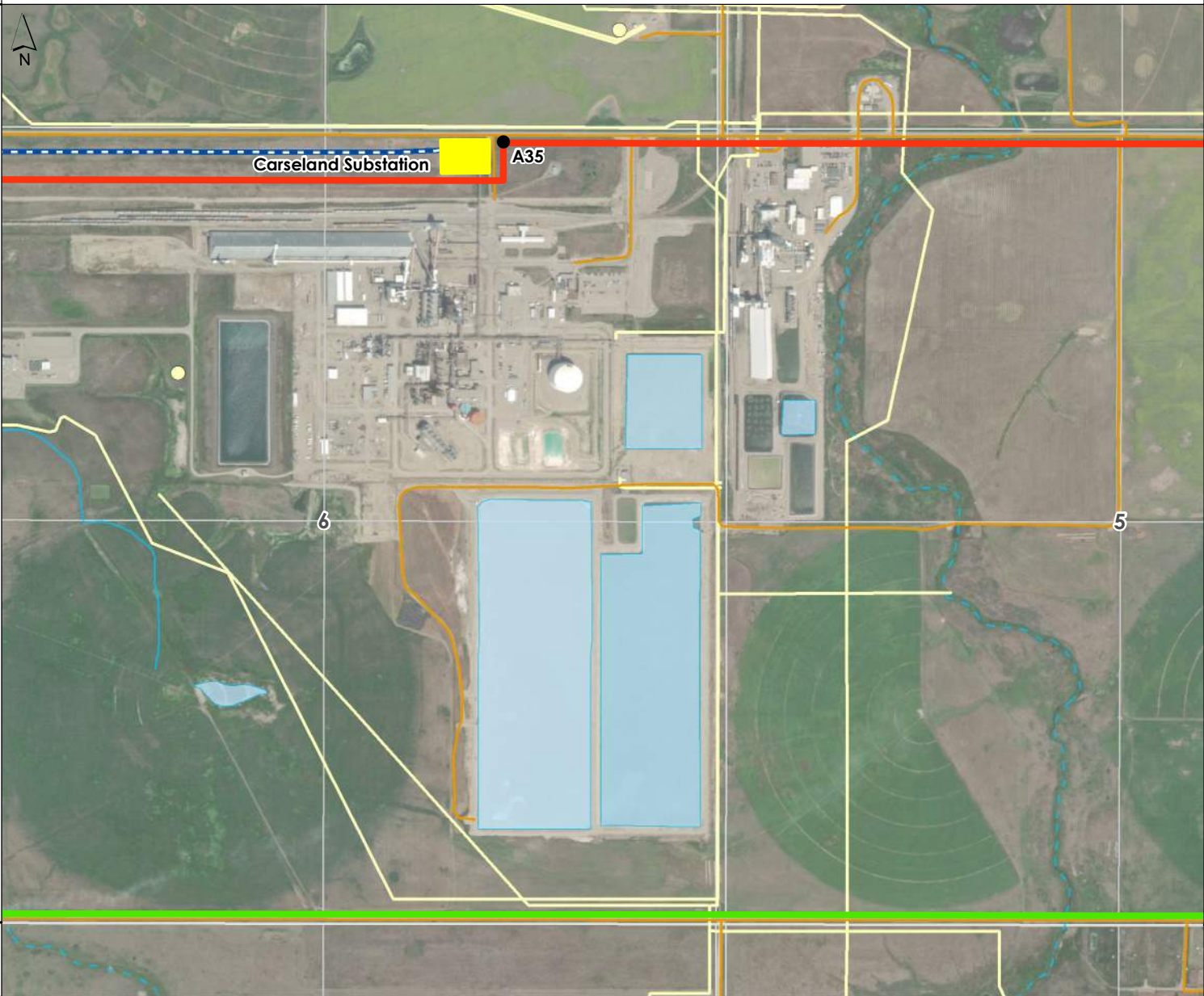


R26 W4M



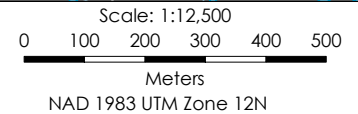
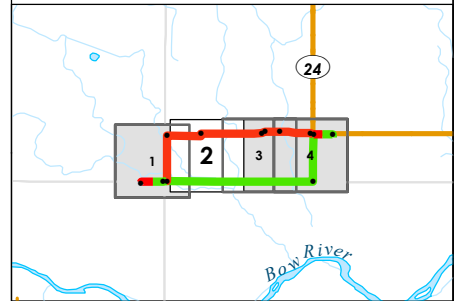
Nova Solar Connection Project SM2

Electrical Grid

- Point Designation
- Transmission Line - Preferred Route
- Transmission Line - Alternative Route
- Existing Transmission Line
- Proposed Nova Substation
- Existing Carseland Substation

Land

- 🏠 Residence
- ⦿ Wellsite
- Pipeline
- Highway
- Road
- Permanent
- Intermittent
- Waterbody



CANADA WEST LAND

Hardline Engineering

Author	JP	Project	HRD-011526
Map Date	10/08/22	Revision	2
Figure	3	Page	2 of 4

Preferred Transmission Line Alignment

- A1 to A10: the proposed transmission line will be located approximately 1m on private property adjacent to the road allowance
- A10 to A15: the proposed transmission line will cross over the road allowance
- A15 to A25 to A35: the proposed transmission line will be located on private property
- A35 to A50: the proposed transmission line will be located approximately 1 m on road allowance.
- A50 to A55: the proposed transmission line will cross over the road allowance
- A55 to A60: the proposed transmission line will be located approximately 1 m on private property adjacent to the road allowance
- A60 to A70: the proposed transmission line will be located approximately 1 m on road allowance.
- A70 to A75: the proposed transmission line will cross the road allowance.
- A75 to A80: the proposed transmission line will be located approximately 1 m on private property adjacent to the road allowance

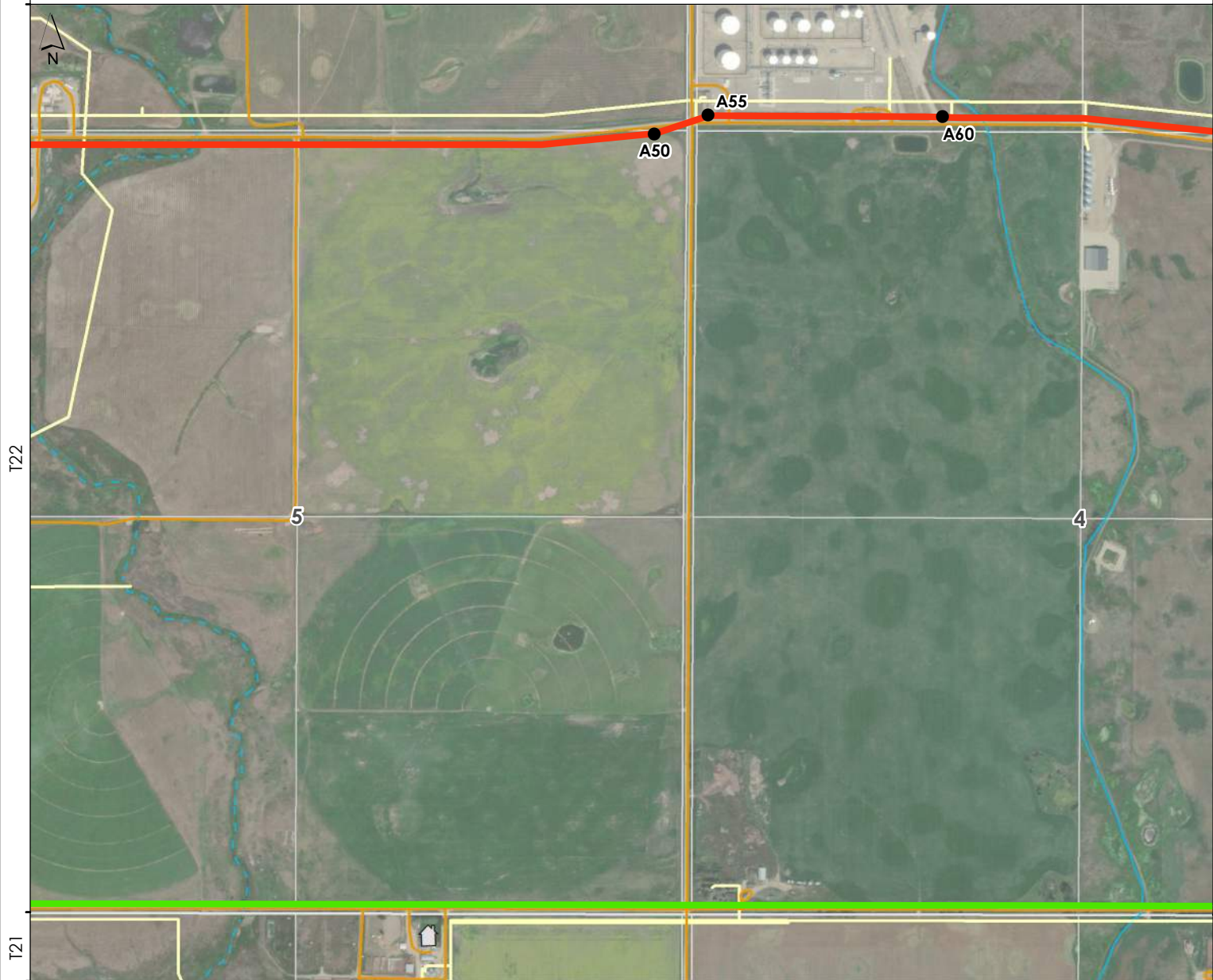
Alternate Transmission Line Alignment

- A1 to A10: the proposed transmission line will be located approximately 1m on private property adjacent to the road allowance
- A10 to A15: the proposed transmission line will cross over the road allowance
- A15 to B70: the proposed transmission line will be located approximately 1 m on road allowance
- B70 to A75 to A80: the proposed transmission line will be located approximately 1 m on private property adjacent to the road allowance
- A15 to B70: the proposed transmission line will be located approximately 1 m on road allowance
- B70 to A75 to A80: the proposed transmission line will be located approximately 1 m on private property

This product has been created with the highest degree of accuracy possible. However, information shown on this map is compiled from numerous sources and may not be complete or accurate. Cardon Group of Companies (CGC) on behalf of Canada West Land (CWL) cannot be held responsible for the misuse or misinterpretation of any information and offers no warranty, guarantees, or representations of any kind in connection to its accuracy or completeness. CGC on behalf of CWL accepts no liability for any loss, damage, or inconvenience caused by the use or reliance on any information or data related to this product.

Source: Esri, Maxar, Earthstar Geographics, and the GIS User Community.

Nova Solar Connection Project SM3

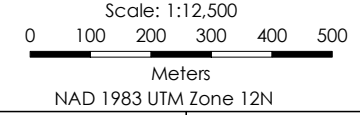
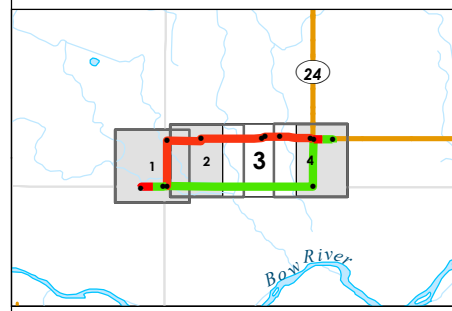


Electrical Grid

- Point Designation
- Transmission Line - Preferred Route
- Transmission Line - Alternative Route
- Existing Transmission Line
- Proposed Nova Substation
- Existing Carse Land Substation

Land

- 🏠 Residence
- Wellsite
- Pipeline
- Highway
- Road
- Permanent
- Intermittent
- Waterbody



CANADA WEST LAND	Hardline Engineering
-------------------------	-----------------------------

Author	JP	Project	HRD-011526
--------	----	---------	------------

Map Date	10/08/22	Revision	2
----------	----------	----------	---

Figure	3	Page	3 of 4
--------	---	------	--------

Preferred Transmission Line Alignment

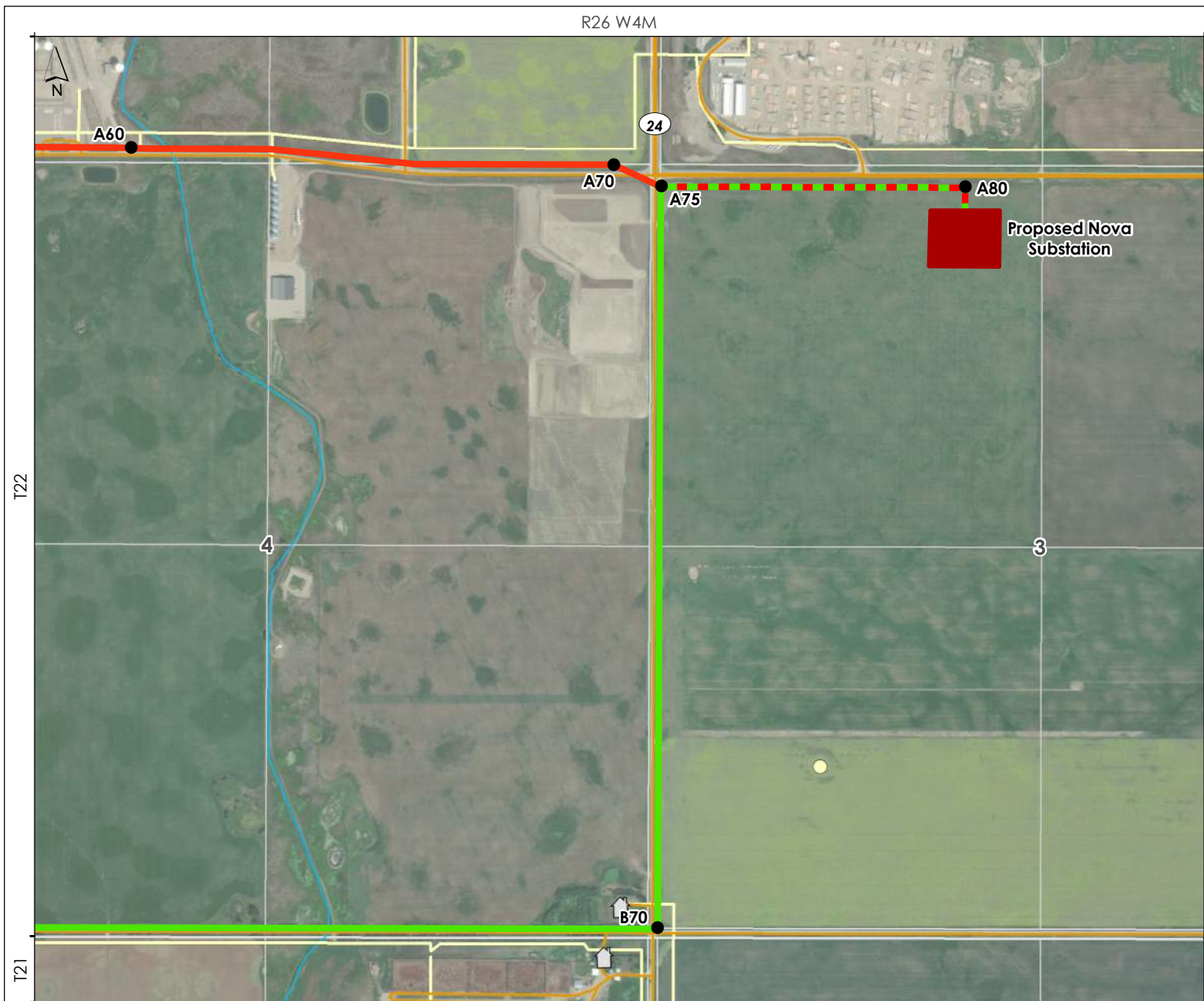
- A1 to A10: the proposed transmission line will be located approximately 1m on private property adjacent to the road allowance
- A10 to A15: the proposed transmission line will cross over the road allowance
- A15 to A25 to A35: the proposed transmission line will be located on private property
- A35 to A50: the proposed transmission line will be located approximately 1 m on road allowance.
- A50 to A55: the proposed transmission line will cross over the road allowance
- A55 to A60: the proposed transmission line will be located approximately 1 m on private property adjacent to the road allowance
- A60 to A70: the proposed transmission line will be located approximately 1 m on road allowance.
- A70 to A75: the proposed transmission line will cross the road allowance.
- A75 to A80: the proposed transmission line will be located approximately 1 m on private property adjacent to the road allowance

Alternate Transmission Line Alignment

- A1 to A10: the proposed transmission line will be located approximately 1m on private property adjacent to the road allowance
- A10 to A15: the proposed transmission line will cross over the road allowance
- A15 to B70: the proposed transmission line will be located approximately 1 m on road allowance
- B70 to A75 to A80: the proposed transmission line will be located approximately 1 m on private property adjacent to the road allowance
- A15 to B70: the proposed transmission line will be located approximately 1 m on road allowance
- B70 to A75 to A80: the proposed transmission line will be located approximately 1 m on private property

This product has been created with the highest degree of accuracy possible. However, information shown on this map is compiled from numerous sources and may not be complete or accurate. Cardon Group of Companies (CGC) on behalf of Canada West Land (CWL) cannot be held responsible for the misuse or misinterpretation of any information and offers no warranty, guarantees, or representations of any kind in connection to its accuracy or completeness. CGC on behalf of CWL accepts no liability for any loss, damage, or inconvenience caused by the use or reliance on any information or data related to this product.

Source: Esri, Maxar, Earthstar Geographics, and the GIS User Community.



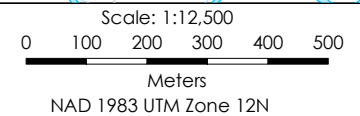
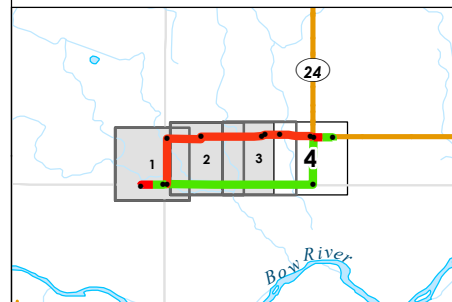
Nova Solar Connection Project SM4

Electrical Grid

- Point Designation
- Transmission Line - Preferred Route
- Transmission Line - Alternative Route
- Existing Transmission Line
- Proposed Nova Substation
- Existing Carse Land Substation

Land

- 🏠 Residence
- Oil and Gas**
- Wellsite
- Pipeline
- Transportation**
- Highway
- Road
- Hydrography**
- Permanent
- Intermittent
- Waterbody



**CANADA
WEST LAND**

**Hardline
Engineering**

Author **JP** Project **HRD-011526**

Map Date **10/08/22** Revision **2**

Figure **3** Page **4 of 4**

Preferred Transmission Line Alignment

- A1 to A10: the proposed transmission line will be located approximately 1m on private property adjacent to the road allowance
- A10 to A15: the proposed transmission line will cross over the road allowance
- A15 to A25 to A35: the proposed transmission line will be located on private property
- A35 to A50: the proposed transmission line will be located approximately 1 m on road allowance.
- A50 to A55: the proposed transmission line will cross over the road allowance
- A55 to A60: the proposed transmission line will be located approximately 1 m on private property adjacent to the road allowance
- A60 to A70: the proposed transmission line will be located approximately 1 m on road allowance.
- A70 to A75: the proposed transmission line will cross the road allowance.
- A75 to A80: the proposed transmission line will be located approximately 1 m on private property adjacent to the road allowance

Alternate Transmission Line Alignment

- A1 to A10: the proposed transmission line will be located approximately 1m on private property adjacent to the road allowance
- A10 to A15: the proposed transmission line will cross over the road allowance
- A15 to B70: the proposed transmission line will be located approximately 1 m on road allowance
- B70 to A75 to A80: the proposed transmission line will be located approximately 1 m on private property adjacent to the road allowance
- A15 to B70: the proposed transmission line will be located approximately 1 m on road allowance
- B70 to A75 to A80: the proposed transmission line will be located approximately 1 m on private property

This product has been created with the highest degree of accuracy possible. However, information shown on this map is compiled from numerous sources and may not be complete or accurate. Cardon Group of Companies (CGC) on behalf of Canada West Land (CWL) cannot be held responsible for the misuse or misinterpretation of any information and offers no warranty, guarantees, or representations of any kind in connection to its accuracy or completeness. CGC on behalf of CWL accepts no liability for any loss, damage, or inconvenience caused by the use or reliance on any information or data related to this product.

Source: Esri, Maxar, Earthstar Geographics, and the GIS User Community.